

DATASHEET **FIBER OPTICS**

Power Supplies

PS-200F



200 watt fan cooled power supply for the OT-CC-16F chassis. Hot swappable 100-240 VAC 50/60Hz operation. Choice of North American (-NA), European (-EU) or United Kingdom (-UK) power cord.

PS-100



100 watt fan cooled power supply for the OT-CC-16 chassis. Hot swappable 100-240 VAC 50/60Hz operation. Choice of North American (-NA), European (-EU) or United Kingdom (-UK) power cord.

PS-200



200 watt fan cooled power supply for the OT-CC-16 chassis. Hot swappable 100-240 VAC 50/60Hz operation. Choice of North American (-NA), European (-EU) or United Kingdom (-UK) power cord.

PS-9060



60 watt fan cooled power supply for the OT-CC-6-1U chassis. Hot swappable 100-240 VAC 50/60Hz operation. Choice of North American (-NA), European (-EU) or United Kingdom (-UK) power cord.

PS-9012



18W wall mount power supply for the OT-DTCR-1 & -2 desktop enclosures. 100-240 VAC 50/60Hz operation. Includes regional power socket adapters.

Enclosures for Optiva Insert Cards

The new Optiva OT-CC-16F, with internal cooling fan, and standard OT-CC-16 enclosures are ruggedized 3RU aluminum rackmount chassis that accept any Optiva insert card. These high capacity 16-card plug-in chassis provide a "state of the art" platform for density and space utilization.

OT-CC-16F



Both 3RU models feature hot-swappable, fan cooled power supplies and insert cards. Options include redundant power supplies, LED indicators for power and status, as well as reversible rack mounting ears. With the addition of the SNMP Management card (Model: OPV-CTLR-IC), all chassis and insert card health parameters may be monitored remotely.

OT-CC-16



The OT-CC-6-1U series chassis is a low profile 1RU rackmount enclosure. It holds up to 6 Optiva insert cards with space for an optional SNMP Management card (Model: OPV-CTLR-IC). It features redundant, hot-swappable, fan cooled power supplies and rack reversible mountable ears. LED indicators are provided for power, fault, optical lock and network management status.

OT-CC-6-1U

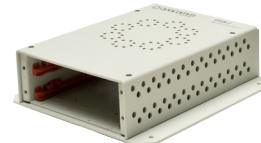


Our smallest and most compact enclosures, the OT-DTCR-2 and OT-DTCR-1 are perfect for installations that are space constrained or simply do not require rackable equipment. Popular uses are for remote video camera feeds, airport terminal signage, or simple point-to-point fiber links. These enclosures are passively cooled and are powered by the external PS-9012 power supply.

OT-DTCR-1



OT-DTCR-2



OPV-CTLR-IC



OT-CC-16F Models

Model	Description
OT-CC-16F-001	Optiva 16-Slot 3RU Fan Cooled Enclosure w/o Power Supplies
OT-CC-16F-002	Optiva 16-Slot 3RU Fan Cooled Enclosure, Reversed Mounting w/o Power Supplies
OT-CC-16F-003	Optiva 16-Slot 3RU Fan Cooled Enclosure with 4" Recessed Mounting w/o Power Supplies
PS-200F-XX	200W Power Supply for the OT-CC-16F Enclosure, Choice of NA, EU or UK Power Cord

■ Satellite products must use the Optiva OT-CC-16F with single or dual 200W power supplies

OT-CC-16 Models

Model	Description
OT-CC-16	16-Slot 3RU Rackmount Enclosure w/o Power Supplies
OT-CC-16-01	16-Slot 3RU Rackmount Enclosure. Reversed Mounting w/o Power Supplies
OT-CC-16-100-XX	Optiva 16-Slot 3RU Enclosure with (1) PS-100-XX Power Supply and NA, EU or UK Power Cord
OT-CC-16-01-100-XX	Optiva 16-Slot 3RU Enclosure, Reversed Mounting with (1) PS-100-XX Power Supply and NA, EU or UK Power Cord
OT-CC-16-100-RPS-XX	Optiva 16-Slot 3RU Enclosure with (2) PS-100-XX Power Supplies and NA, EU or UK Power Cord
OT-CC-16-01-100-RPS-XX	Optiva 16-Slot 3RU Enclosure, Reversed Mounting with (2) PS-100-XX Power Supplies and NA, EU or UK Power Cord
PS-100-XX	100W Power Supply for the OT-CC-16 Enclosure, NA, EU or UK Power Cord
PS-200-XX	200W Power Supply for the OT-CC-16 Enclosure, NA, EU or UK Power Cord
FA-2000-XX	Cooling Fan Tray for OT-CC-16, 1RU, 100-240V Internal Power Supply, NA, EU or UK Power Cord

OT-CC-6-1U Models

Model	Description
OT-CC-6-1U-XX	6-Slot 1RU Rackmount Enclosure with (2) PS-9060-NA Power Supplies, NA, EU or UK Power Cord
PS-9060-XX	60W Power Supply for the OT-CC-6-1U Enclosure, NA, EU or UK Power Cord

OT-DTCR-1 & -2 Models

Model	Description
OT-DTCR-1	1-Slot Desk Top / Wall Mount Enclosure with PS-9012 Power Supply
OT-DTCR-2	2-Slot Desk Top / Wall Mount Enclosure with PS-9012 Power Supply
PS-9012	18W Power Supply with Regional Power Adapters

Compliance



General

Specifications	Values
Operating Temperature	-20°C to +55°C
Storage Temperature	-40°C to +85°C
Humidity	0 to 95% (Non-Condensing)
Warranty	3 Year

OT-CC-16F

Specifications	Values
Dimensions	9.64" L x 19" W x 5.22" (3RU) H
Weight (Chassis only)	8 lbs.
PS-200F-XX	200W 12VDC / 90-240VAC 50/60Hz

OT-CC-16

Specifications	Values
Dimensions	9.64" L x 19" W x 5.22" (3RU) H
Weight (Chassis only)	8 lbs.
PS-100-XX	100W 9VDC / 100-240VAC 50/60Hz
PS-200-XX	200W 9VDC / 100-240VAC 50/60Hz

OT-CC-6-1U

Specifications	Values
Dimensions	19" L x 9.62" W x 1.7" (1RU) H
Weight	10 lbs.
PS-9060-XX	60W 12VDC / 100-240VAC 50/60Hz

OT-DTCR-1 & OT-DTCR-2

Specifications	Values
DTCR-1 Dimensions	7.47" L x 7.0" W x 1.08" H
Weight	1.25 Lbs.
DTCR-2 Dimensions	7.47" L x 7.0" W x 1.88" H
Weight	1.6 Lbs.
PS-9012	18W 12VDC / 100-240VAC 50/60Hz

Monitoring & Control

Specifications	Values
Local	LED status and alert indicators
Remote	OptivaView SNMP Management Software

■ Requires OptivaView SNMP Controller Card (Model: OPV-CTRL)