



Model Number: **D0102D1ULP-S5S5**

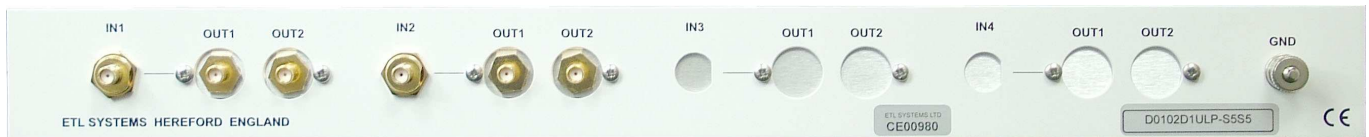
2-way Dual L-band Passive Splitter / Combiner



Front View of Model D0102D1ULP-S5S5

This dual passive shelf contains 2 of ETL's 2-way L-band splitter or combiner units. It operates over the frequency range of 850-2150 MHz and is housed in a 1U high, 19" rack mountable shelf.

This unit is designed where all items must be rack mountable, and as this is a passive unit it may be used as either a splitter or a combiner.



Rear View of Model D0102D1ULP-S5S5

This particular unit has 50 ohm SMA connectors but is available in a variety of impedances and connector types (model numbers will vary).

Key Features

- Dual 2-way L-band passive Splitter/Combiner
- Compact 1U high unit





Model Number: D0102D1ULP-S5S5

2-way Dual L-band Passive Splitter / Combiner

RF Engineering
and Custom Build

Technical specifications and operating parameters

RF Parameters			
Capacity		2- way	
Frequency Range		850-2150 MHz (L-band)	
Insertion Loss		1 dB	nominal, above theoretical 3dB minimum
Flatness	850-2150 MHz	± 1.0 dB	± 0.35 dB typical
	Any 36 MHz band	± 0.25 dB	± 0.2 dB typical
Input Return Loss		14 dB typical	
Output Return Loss		18 dB typical	

Environmental	
Operating temperature	0 to 45°C
Location	Indoor use only
Storage temperature	-20°C to +75°C
Humidity	85% non-condensing

Physical	
Input Connector	SMA
Input Impedance	50Ω
Output Connector	SMA
Output Impedance	50Ω
Dimensions	1U high x 350mm deep x 19" wide
Weight	3 kg
Colour	White 00-E-55 semi-gloss (Front panel)

Power	
AC Power	None
LNB Power	None
PSU	None
Hot-swap PSU	N/A

Key Features

2-way passive splitter/combiner housed in a 1U high 19" rack mountable shelf

ETL SYSTEMS LIMITED
Coldwell Radio Station
Madley
Hereford
England HR2 9NE

TELEPHONE
+44 (0)1981 259020

EMAIL
info@etlsystems.com

FACSIMILE
+44 (0)1981 259021

WEB
www.etlsystems.com

